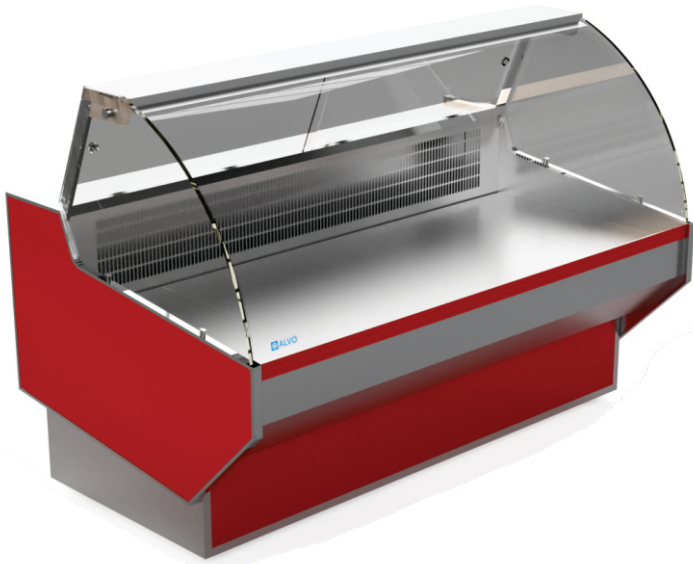




ALVO

Refrigeration Solutions



TECHNO SIGHT

1066, Opposite PCSIR staff, Near Ameer Chowk,
College road, Township, Lahore. 0423-5124344
www.technosight.com.pk

INTRO

TECHNOSIGHT was founded in **2000**, with manufacturing expertise rooted in more than 20 years of experience. Today, **TECHNOSIGHT** is a fast growing manufacturing company for commercial refrigeration equipment and bakery counters.

Operational Excellence: **TECHNOSIGHT** strives to provide exceptional value to our customers with an intense focus on quality, warranty, reliability, delivery, and launch support. This provides a foundation for **TECHNOSIGHT**'s profitable growth in **PAKISTAN**.

National Market Cost Competitiveness: **TECHNOSIGHT** has aligned its manufacturing, engineering and sourcing footprint to increase exposure to national growth markets, support product development initiatives and establish regional market cost competitiveness.

Technology Leadership: **TECHNOSIGHT**'s innovative product, processes and systems technology, positions **TECHNOSIGHT** is providing industry-first, Refrigeration products.

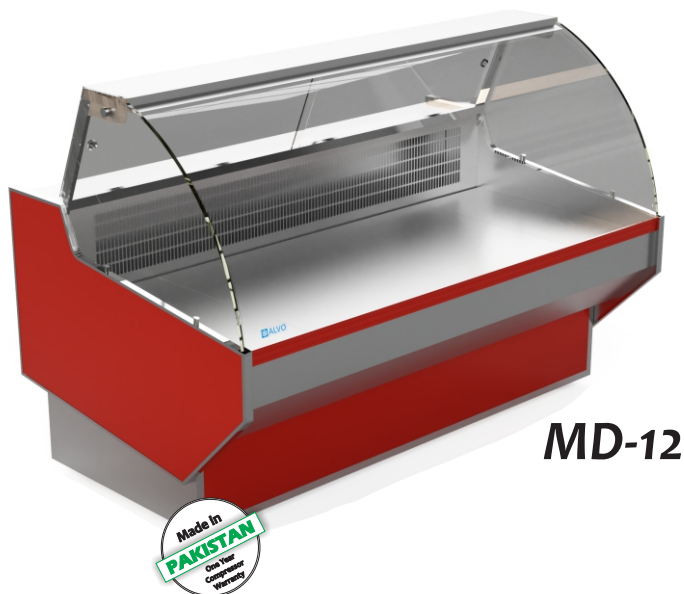


ALVO is a brand name of **TECHNOSIGHT** for commercial refrigeration equipment. Our main products are **MULTI DECK CHILLER, MEAT DISPLAY CHILLER, BAKERY CHILLERS, COLD KITCHEN EQUIPMENT AND COUNTERS**. We provide complete solutions for **Super store, Meat shop and Bakery equipment**.

BRAND

MEAT DISPLAY CHILLERS

Temp: +2 to +5 C



MD-12

MD series meat display chillers are specially designed to meet cooling and freshness requirement of products. MD series has dual cooling system. It works on static cooling system and also can run evaporator fans if required. Complete stainless steel body.
2" PU filled body.
8 mm curved glass.
Digital temperature controller.
Danfoss (commercial range) compressor.
Casters for easy movement.
Chilled storage under neath with 2 doors.
Color choice of unit available. (ALVO color chart).
L.E.D. lights.

Sizes available

MD-8 Size: (L) 48" x (W) 42" x (H) 52"

MD-10 Size: (L) 60" x (W) 42" x (H) 52"

MD-12 Size: (L) 72" x (W) 42" x (H) 52"

VERTICAL MEAT DISPLAY CHILLERS

Temp: +0 to +5 C

Complete stainless steel display chillers.
Our Chillers less dry or meat weight loss due to direct cool refrigeration system.
Fan air system causes dry meat skin and responsible for meat weight loss **that's why** we designed direct cool chillers for meat shop.

MAIN FEATURES

Complete S.S body, Danfoss (Secop) compressor, Digital temperature controller, Casters, Drip tray, LED light.



VMC-72

Size: (L) 72" x (W) 30" x (H) 78"



VMC-48

Size: (L) 48" x (W) 30" x (H) 78"



VMC-24

Size: (L) 24" x (W) 30" x (H) 78"

GLASS DOOR DISPLAY CHILLERS

Temp: +2 to +5 C



GDC-3D

GDC series stainless steel glass door display chillers are designed to meet cooling and freshness of chilled products. It has a big evaporator to provide a quick cooling. We have designed a best refrigeration system in it.

STANDARD FEATURES:

- Complete stainless steel body.
- 2" PU filled body for better cooling holding.
- Danfoss (commercial range) compressor.
- Double glazed glass doors.
- Digital temperature controller.
- Air circulated evaporator.
- Casters of easy movement.

Door frame Color choice available. (ALVO color chart).

Sizes available

GDC-1D Size: (L) 24" x (W) 30" x (H) 78"

GDC-2D Size: (L) 48" x (W) 30" x (H) 78"

GDC-3D Size: (L) 72" x (W) 30" x (H) 78"



GDC-3D

Size: (L) 72" x (W) 30" x (H) 78"



GDC-2D

Size: (L) 48" x (W) 30" x (H) 78"



GDC-1D

Size: (L) 24" x (W) 30" x (H) 78"

MULTI DECK CHILLERS

Temp: +5 to +10 C



MDC-6B-DL

MDC series multi deck chillers are designed for supper markets in Pakistan.

Bake painted or Stainless steel both finishes available.

These chillers has wide fins evaporators to perform a better cooling system.

2" PU filled body.

Double glazed glass sides.

Digital temperature controller.

Tecumseh / Copeland (commercial range) compressor.

Casters for easy movement.

L.E.D. lights under each shelf.

Night puller curtain.

Color choice of unit available. (ALVO color chart).

Built in condensing unit.

Standard Sizes

MDC-4B-DL Size: (L) 48" x (W) 36" x (H) 78"

MDC-6B-DL Size: (L) 72" x (W) 36" x (H) 78"

MULTI DECK CHILLERS

Temp: +5 to +10 C

MDC series multi deck chillers are designed for supper markets in Pakistan.

Bake painted or Stainless steel both finishes available.

These chillers has wide fins evaporators to perform a better cooling system.

2" PU filled body.

Double glazed glass sides.

Digital temperature controller.

Tecumseh / Copeland (commercial range) compressor.

Casters for easy movement.

L.E.D. lights under each shelf.

Night puller curtain.

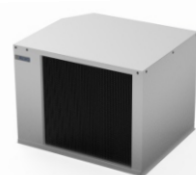
Color choice of unit available. (ALVO color chart).

Remote condensing unit.

Standard Sizes

MDC-6R-DL Size: (L) 72" x (W) 36" x (H) 78"

MDC-8R-DL Size: (L) 96" x (W) 36" x (H) 78"



Condensing unit



MDC-6R-DL

Stainless steel sink
01


Size: L (72") x D (24") x H (35")
Complete S.S two bowl sink.
Different sizes available.

Meat Bone Saw
02

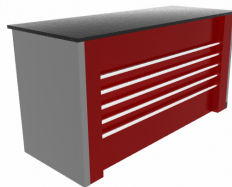

Size: L (18") x W (18") x H (36")
Cutting table size: 14" x 15"
1 HP 220 VAC, 1.1 KW motor
MADE IN CHINA

Meat Mincer 32 no.
03

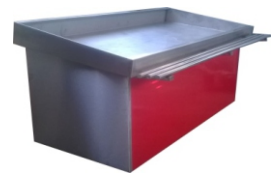

Size: L (15") x D (18") x H (29")
Complete S.S body.
Different sizes available.
1 HP Heco motor, 220 VAC

Meat Prep Table
04


Size: L (72") W (24") H (35")
Complete S.S counter

S.S Cash counter
05


Size: L (48") x W (24") x H (35")
Complete S.S counter.

S.S Fish counter
06


Size: L (72") x W (36") x H (36")
Complete S.S counter.

S.S Meat Cutting Table
07


Size: L (48") x D (30") x H (35")
Complete S.S table.
Different sizes available.

S.S work table
08


Size: Different sizes
Complete S.S work tables

S.S counter
09


Size: Different sizes
Complete S.S counters



For more details please call us at
03337259459

Pizza prep table



10

Size: L (48") x W (30") x H (35")
Complete S.S body with imported pans.
Danfoss (Secop) Compressor.
Digital temperature controller.
Heavy duty casters.

S.S salad bar



11

Size: L (60") x W (34") x H (35")
Complete S.S body, imported pans.
Danfoss (Secop) Compressor.
Digital temperature controller.
Heavy duty casters.

S.S under counter refrigerator



12

Size: L (72") x W (30") x H (35")
Complete S.S body.
Danfoss (Secop) Compressor.
Digital temperature controller.
Heavy duty casters.

Straight glass bakery counter



13

Size: L (48") x D (30") x H (48")
Straight glass bakery counters
Different sizes available.

Bent glass bakery counter



14

Size: L (48") x D (30") x H (48")
Bent glass bakery counters
Different sizes available.

Bent glass bakery counter



15

Size: L (48") x D (30") x H (48")
Bent glass bakery counters
Different sizes available.

Cash counter



16

Size: L (48") x D (30") x H (42")
Cash counters
Different sizes available.

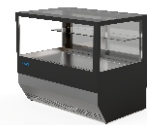
Straight glass cake chiller



17

Size: L (48") x D (30") x H (48")
Straight glass cake chiller with chilled storage.
Different sizes available.

Tabletop cake chiller



18

Size: L (36") x D (24") x H (36")
Tabletop cake chiller
Different sizes available.



For more details please call us at
03337259459



1066, Opposite PCSIR staff, near Ameer Chowk, College road, Township. Lahore.
www.technosight.com.pk Email. info@technosight.com.pk Phone: +92 423 512 43 44